


# CANNULAS

## Custom Made to Order


At  we make it easy! Select from over 15,000,000 different cannula combinations by following these (10) ten easy steps.

### CONSERVATIVE



Select from 52 tip styles, 4 tip shapes, 12 standard lengths, 14 standard diameters, 5 basic curve options, 22 handles, choose vent holes or not, choose perfect alignment or not, or simply create your own custom cannula.

Our manufacturing process begins by selecting the highest quality stainless steel. Each cannula is then precisely machined, polished and assembled to your own specifications.

All  Cannulas are manufactured by Wells Johnson and carry a lifetime warranty against defect.

### 10 Easy Steps

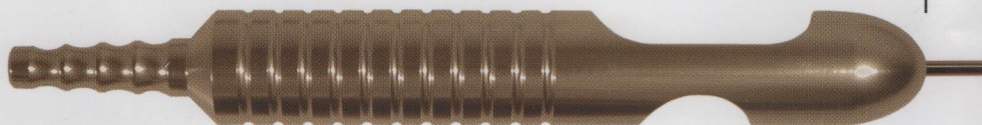
Ordering made easy by selecting the following:

1. Quantity
2. Tip Shape
3. Tip Style
4. Diameter
5. Length
6. Handle
7. Straight or Curved
8. Vent Holes yes/no
9. Perfect Alignment yes/no
10. Special Instructions

### AGGRESSIVE



Our ergonomic Champagne Cannula™ Handle provides perfect balance.





# BSZ SURGICO



Guarantees Cannulas for Life

## INFUSION



Open-Ended 20-1257-00



Multi-Hole 6 20-1218-00 **MOST POPULAR**



Three Hole Spatula 20-1223-00



Spiral 20-1243-00



Multi-Hole 12 20-1252-00

All infusion tips with deluxe luer lock tip base.

## STANDARD DIAMETERS

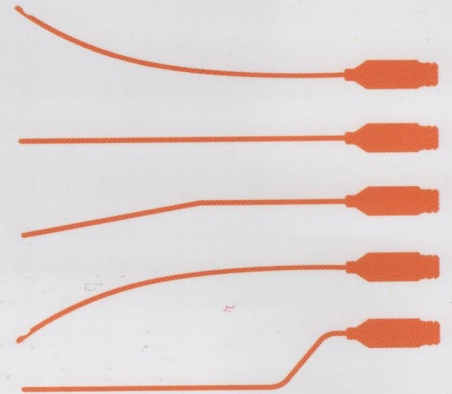
1.2mm	•	18g
1.4mm	•	17g
1.6mm	•	16g
2mm	•	14g
2.7mm	•	12g
3mm	•	11g
3.4mm	•	10g
4mm	•	8g
5mm	•	6g
6mm	•	
7mm	•	
8mm	•	
9mm	•	
10mm	•	

MICRO CANNULA SIZES

STANDARD CANNULA SIZES

## CURVE PREFERENCE

- Convex Curve
- Straight
- Bend
- Concave Curve
- Swan Neck



## MICRO CANNULAS



Aspiration (Harvesting) 20-1501-00



Re-Injection Side Port 20-1503-00



Re-Injection Style II 20-1504-00



Re-Injection Open Ended 20-1505-00



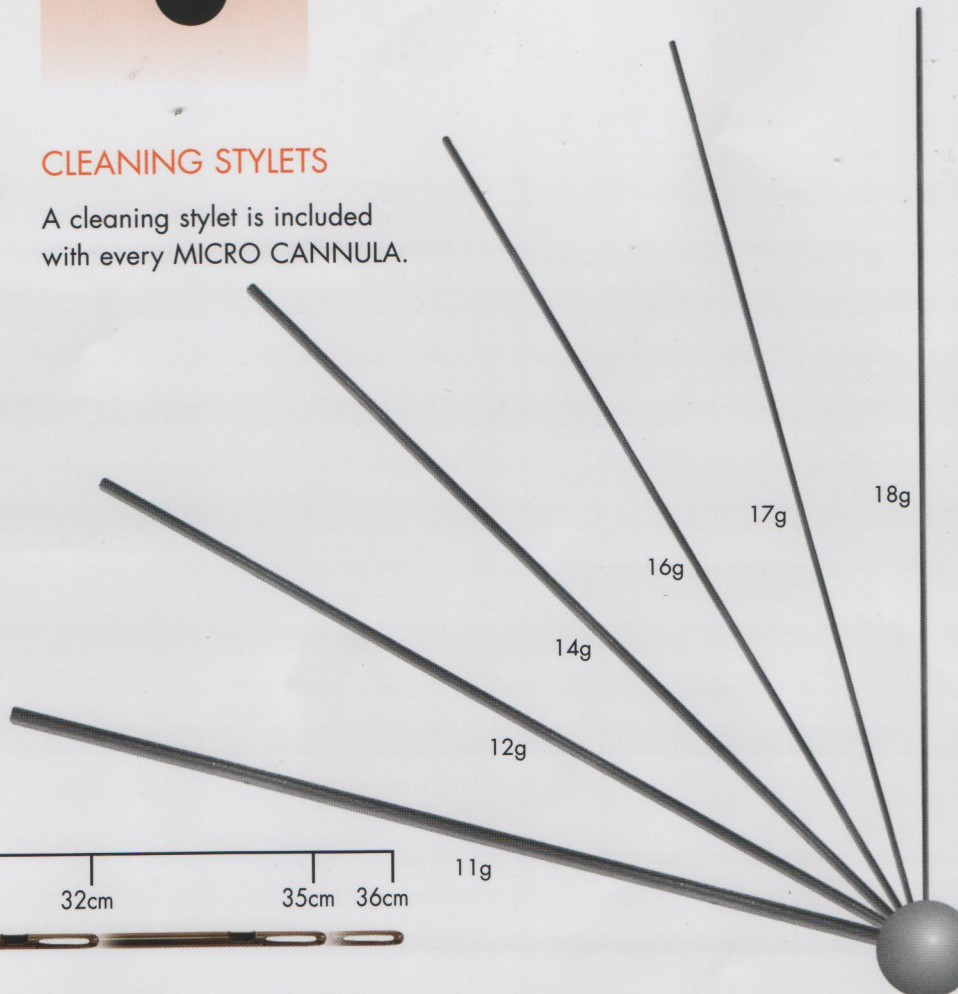
V-Dissection 20-1507-00



Infiltration 20-1515-00

## CLEANING STYLET

A cleaning stylet is included with every MICRO CANNULA.



25cm 30cm 32cm 35cm 36cm



## Worlds Largest Selection of Tip Styles

### SUPERFICIAL



Bevel 20-1212-00



Rapid Sieve 20-1213-00



Toledo V™ 20-1215-00



Cane Superficial 20-1244-00

LATEST DESIGN



Etching 20-1241-00

### SPECIAL



Dual Port Spatula 20-1216-00



Cook™ 20-1219-00



Texas 20-1220-00



Side Port Injector 20-1221-00



Spatula 20-1222-00

MOST POPULAR



Spatula Plus 20-1222-11

LATEST DESIGN

### SPECIAL CON'T



Keel™ 20-1224-00



Sattler™ 20-1225-00



Puente™ Tornado 20-1236-00



Jorge™ 20-1238-00



Flap 20-1069-00

LATEST DESIGN



Chisel 20-1096-00

LATEST DESIGN

### CANNULA TIP SHAPES

Blunt 

Bullet 

Spatula 

Point 

### VENT HOLES

Please Designate YES or NO

### DISSECTING



Trevisani™ 20-1226-00



Rosenberg™ 20-1227-00



Becker Round™ 20-1228-00



Becker Grater Round™ 20-1230-00



Becker Grater Flat™ 20-1229-00



Becker Basket™ 20-1239-00



Becker Twist™ 20-1232-00



Aiache™ 20-1233-00



Pinto™ 20-1234-00

### STANDARD LENGTHS

7cm, 9cm, 10cm,  
15cm, 21cm, 23cm,  
25cm, 30cm, 32cm  
35cm, 36cm. Custom  
lengths also available.

SPECIFY ANY STANDARD OR CUSTOM LENGTH

7cm

9cm

10cm

12cm

15cm

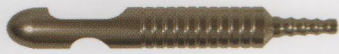
21cm



# BSZ SURGICO

## Worlds Largest Selection of Handles and Tip Bases

### CANNULA HANDLES



Champagne  
Ergonomic **MOST POPULAR**



Biplane™\*  
Ergonomic **LATEST DESIGN**



7/8" One Piece  
Hex Aluminum



5/8" One Piece Hex Steel  
First Design



Swivel 1" One Piece  
Aluminum Handle



7/8" One Piece  
Stainless Steel Handle



5/8" One Piece  
Stainless Steel Handle



1" One Piece  
Aluminum Handle



3/4" One Piece  
Aluminum Handle



1" One Piece  
Blue Aluminum Handle



3/4" One Piece  
Blue Aluminum Handle



1" One Piece **LATEST DESIGN**  
Green Aluminum Handle



3/4" One Piece **LATEST DESIGN**  
Green Aluminum Handle

### TIP BASES FOR 2 PIECE CANNULAS

Your longest cannula will fit  
in a standard autoclave using  
our 2 piece cannula design.



7/8" Tip Base  
Detaches from handle.



5/8" Tip Base  
Detaches from handle for easy cleaning.

### HANDLES FOR 2 PIECE CANNULAS



1" Delrin Plastic Handle  
20-0005-00



5/8" Delrin Plastic Handle  
21-0005-01

### TIP BASES FOR SYRINGE SYSTEMS



60cc Toomey Syringe Hub\*  
8.82mm Aperture (withstands lateral stress)



35cc Catheter Syringe Hub\*  
4.62mm Aperture (withstands lateral stress)



10cc Oral Syringe Hub\*  
3.08mm Aperture (withstands lateral stress)



Deluxe Luer Lock Tip Base  
**MOST POPULAR**

### LUER LOCK HANDLES



Delrin Infusion/Aspiration  
Handle  
20-6004-00



Delrin Plastic Infusion Handle  
20-6004-98



On/Off Infusion Handle  
Aluminum handle with a stop-cock.  
20-6055-00



Deluxe On/Off Infusion  
Handle  
20-6060-00



Trumpet Valve On/Off  
Infusion Handle  
20-6057-00



Becker™ Aluminum Double  
Luer Lock Infusion Handle  
20-0007-00



Aluminum Luer Lock Handle  
21-0008-11 (3/4")  
22-0008-11 (1")

\*Patented and/or Patents Pending